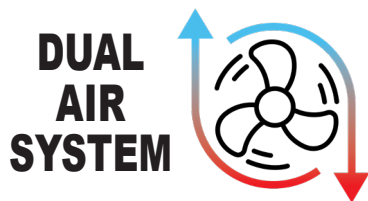


DTF/SCREEN INFRARED DRYERS

ECONORed VP SERIES

DTF
POWERHOUSE



Forced-Air-Make-up provides:

- Cool chamber skin
- Controlled and filtered exhaust make-up air*

Downdraft Exhaust

- Pulls contaminated air below belt
- Holds down film and light material
- Moisture drip valve below machine
- Filters keep blower & stack clean
- Adjustable 100% to 10% for lightweight items like DTF film



ERVP-VI-24

CE CERTIFIED
BY CERTIFICATION EXPERTS
THE NETHERLANDS

Standard Wattage

Belt Width x Length

Chamber (tunnel) Length

Heater Width

CURE TIMES**

DTF Films

Plastisol @ 25 secs.

Water Based/Discharge @ 50 secs.

ERVP-III-24

10,800w

24" x 8¾' (61 x 267cm)

4.5' (137cm)

24" (61cm)

1 Row

150+/hr

450+/hr

150+/hr

ERVP-VI-24

15,600w

24" x 13¼' (76.2 x 404cm)

9' (275cm)

24" (61cm)

1 Row

300+/hr

900+/hr

300+/hr

Features

- ACCURATE** Digital PID Temperature controller is accurate to +/-1° F
- ADVANCED** Top-mounted filtered make-up air system also cools the chamber shell
- ADJUSTABLE** 2 - 7" (5 - 17.7cm) belt-to-heater height adjustment****
- CONVENIENT** Digital belt speed voltmeter, a must have!
- HEAVY DUTY** "X-Series" Conveyor Belt Tracking System w/HD drive.
- EXPANDABLE** Add heat chambers and belt extensions. (rear idler required over 17' long)

Options

- Higher CFM exhaust available
- Side heaters (expand cure zone to full belt width)***
- Add heat chambers @ 4.5' (137 cm) long.
- Belt extensions, front or rear, 18" (46 cm) increments
- 3-Phase, 208, 380, 480 voltages available
- Conveyor Air Bar
- Exhaust Hood, provides extra fume extraction
- Locking casters for easy mobility
- Donut Probe

* Make-up air is: Added air that "makes up" for or replaces air that is being removed by your machines exhaust.

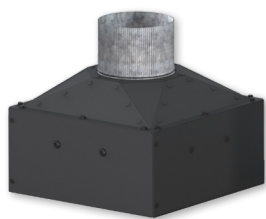
** Production speeds are estimates are based on 16" centers and will vary depending on ink manufacturer, humidity of shop, and other variables.

*** Heater height 4-7" (10.2 - 17.7cm) with optional side heaters.



ERVP-0925

INFRARED DRYER ACCESSORIES



EXH-D

Add-On exhaust for
D-100 and D-1000

S-100



Mobile Stand w/ wheels

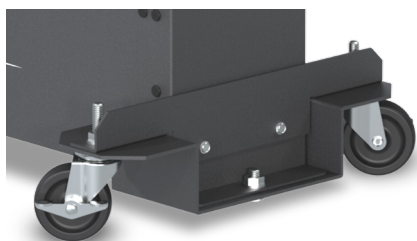
Two sizes available

- 27 x 27" (68.6 x 68.6 cm)
- 27 x 35" (68.6 x 88.9 cm)

Optional screen shelves and drawer kits

Perfect for:

- Presses and dryers
- PTF-100 powder shaker
- Additional worktop space



WS-E-DD

Drop Down Wheel Set for
DB, LR & EC-I Dryers

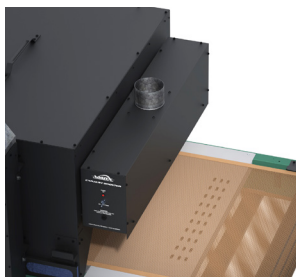
WS-EHD

Drop Down Wheel Set for
EC-II, ER & BR Dryers



WS-EC

Standard Wheel Set for
all non-tabletop Dryers

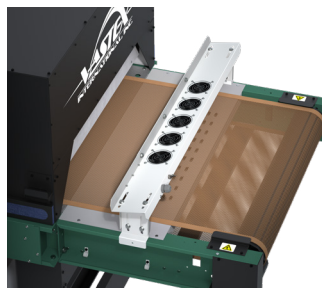


EXHAUST HOOD

Strongly recommended for DTF adhesives

FEATURES

- Removes fumes at exit the dryer
- EXH-D1H fits D-100 and D-1000 (chamber mounted)
- EXH-18 fits 18" (46cm) to 30" (76cm) wide belts
- EXH-42 fits 54" (137cm) wide belts
- EXH-66 fits 78" (198cm) wide belts
- Available in 120v or 240v



CONVEYOR AIR BAR

FEATURES

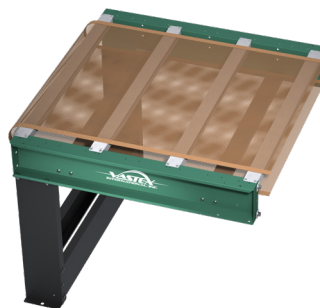
- Cools ink as garments exit the dryer
- CABX-30 fits 33.1-39.1" (84-99cm) wide conveyor
- CABX-54 fits 58.3-64.3" (148-163cm) wide conveyor
- CABX-78 fits 82.3-88.3" (209-224cm) wide conveyor
- Works on many non-Vastex dryers
- Available in 120v or 240v



HAT SUPPORT RAIL

FEATURES

- Angles hats so front is parallel with heaters
- HR-1 fits EconoRed II dryers
- HR-2 fits EconoRed III & BigRed Dryers



CONVEYOR EXTENSIONS

Extend your conveyor in
18" (46cm), 36" (92cm) and
54" (137cm) increments



EconoRed II & III

Technical Specifications

CE	ER-II-30	ER-II-54	ERVP-III-24	ER-III-30	ER-III-54	ER-III-78
Heater Warranty	5 Year	5 Year	5 Year	5 Year	5 Year	5 Year
Defect Warranty	2 Year	2 Year	2 Year	2 Year	2 Year	2 Year
Shirts / Hr* Plastisol @ 25 secs	300+	2 Rows - 600+	450+	450+	2 Rows - 900+	3 Rows - 1,350+
Shirts / Hr* - Water-based/Discharge	100+ @ 70 secs.	2 Rows - 200+ @ 70 secs.	150+ @ 70 secs.	150+ @ 70 secs.	2 Rows - 300+ @ 70 secs.	3 Rows - 450+ @ 70 secs.
DTF Films / Hr*	100+	2 Rows - 200+	150+	150+	2 Rows - 300+	3 Rows - 450+
Time in Tunnel Range (mm:ss)	00:11 - 01:39	00:11 - 01:39	00:17 - 02:29	00:17 - 02:29	00:17 - 02:29	00:17 - 02:29
Belt Speed	1.8 - 23 FPM (0.5 - 7 MPM)	1.8 - 23 FPM (0.5 - 7 MPM)	1.8 - 23.6 FPM (0.6 - 7.2 MPM)	1.8 - 23.6 FPM (0.6 - 7.2 MPM)	1.8 - 23.6 FPM (0.6 - 7.2 MPM)	1.8 - 23.6 FPM (0.6 - 7.2 MPM)
Exhaust (Free Air)	650 CFM (18.4 CMM)	650 CFM (18.4 CMM)	352 CFM (10 CMM) Opt. 724 CFM (20.5 CMM)	650 CFM (18.4 CMM)	550 CFM (15.6 CMM)	700 CFM (19.9 CMM)
Exhaust Stack Diameter	8" (20.32 cm)	8" (20.32 cm)	6" (15.24 cm) Opt. 8" (20.5 CMM)	8" (20.32 cm)	8" (20.32 cm)	8" (20.32 cm)
Overall Length	87" (221 cm)	87" (221 cm)	105" (267 cm)	105" (267 cm)	105" (267 cm)	105" (267 cm)
Overall Width	45.2" (114.8 cm)	69.2" (175.8 cm)	48" (122cm)	45.2" (114.8 cm)	69.2" (175.8 cm)	93.2" (236.7 cm)
Overall Height	60.9" (154.7 cm)	60.9" (154.7 cm)	70" (178cm)	60.9" (154.7 cm)	60.9" (154.7 cm)	60.9" (154.7 cm)
Belt Width	30" (76 cm)	54" (137 cm)	24" (61 cm)	30" (76 cm)	54" (137 cm)	78" (404 cm)
Chamber Length	36" (91 cm)	36" (91 cm)	54" (137cm)	54" (137cm)	54" (137cm)	54" (137cm)
Chamber Infeed Width	34.5" (88 cm)	58.5" (149 cm)	34.5" (88 cm)	34.5" (88 cm)	58.5" (149 cm)	82.5" (209cm)
Chamber Infeed Height (adjustable)	2" - 7" (5 - 17.7 cm)	2" - 7" (5 - 17.7 cm)	2" - 7" (5 - 17.7 cm)	2" - 7" (5 - 17.7 cm)	2" - 7" (5 - 17.7 cm)	2" - 7" (5 - 17.7 cm)
Heat Range (@ Heater)	0-850 F° (0-454 C°) @ 240V	0-850 F° (0-454 C°) @ 240V	0-850 F° (0-454 C°) @ 240V	0-850 F° (0-454 C°) @ 240V	0-850 F° (0-454 C°) @ 240V	0-850 F° (0-454 C°) @ 240V
Heater Size & Standard Wattage	12" x 24" (30 x 61 cm) 2 @ 3,600 = 7,200 Watts @ 240V 12" x 24" (30 x 61 cm) 2 @ 3,000 = 6,000 Watts @ 400V & 480V	12" x 48" (30 x 122 cm) 2 @ 7,200 = 14,400 Watts @ 240V 2 @ 6,000 = 12,000 Watts @ 400V & 480V	12" x 24" (30 x 61 cm) 3 @ 3,600 = 10,800 Watts @ 240V	12" x 24" (30 x 61 cm) 3 @ 3,600 = 10,800 Watts @ 240V 12" x 24" (30 x 61 cm) 3 @ 3,000 = 9,000 Watts @ 400V & 480V	12" x 48" (30 x 122 cm) 3 @ 7,200 = 21,600 Watts @ 240V 3 @ 6,000 = 18,000 Watts @ 400V & 480V	12" x 72" (30 x 183 cm) 3 @ 7,800 = 23,400 Watts @ 240V, 400V, & 480V
Cost / hour to operate based on 10 cents / kwh	72 cents @ 240V 60 cents @ 380V & 480V	\$1.44 @ 240V \$1.20 @ 380V & 480V	\$1.08 @ 240V 90 cents @ 380V & 480V	\$1.08 @ 240V 90 cents @ 380V & 480V	\$2.16 @ 240V \$1.80 cents @ 380V & 480V	\$2.34 @ 240V, 380V, & 480V
Electrical Specs**	Amperage shown is for reference only, actual amperage at installation will depend on exact line voltage.					
240V, 1 Phase 3 wire 50/60 HZ	FLA = 39A	FLA = 72A	FLA = 58A	FLA = 56A	FLA = 105A	FLA = 113A
240V, 3 Phase 4 wire 50/60 HZ	FLA = 25A	FLA = 45A	FLA = 37A	FLA = 35A	FLA = 64A	FLA = 68A
400V, 3 Phase 5 wire 50/60 HZ	FLA = 15A	FLA = 24A	FLA = 22A	FLA = 20A	FLA = 33A	FLA = 40A
480V, 3 Phase 4 wire 50/60 HZ	FLA = 13A	FLA = 21A	FLA = 19A	FLA = 17A	FLA = 29A	FLA = 35A
Electrical Connection	All amps shown are FLA (Full Load Amps) , not recommended line size! Dryers on this page must be hard wired to the power terminal provided. A licensed electrician must be consulted and should refer to articles, 210.20(a), 215.3 and 310 of the NEC code.					
Shipping Weight**	665 lbs (302 kg)	1,130 lbs (513 kg)	1,000 lbs (454 kg)	900 lbs (409 kg)	1,375 lbs (624 kg)	Call for details
Shipping Dimensions**	61" x 43" x 65" (155 x 110 x 166 cm)	78" x 49" x 65" (199 x 125 x 166 cm)	61" x 61" x 65" (155 x 155 x 166 cm)	61" x 61" x 65" (155 x 155 x 166 cm)	93" x 65" x 65" (237 x 166 x 166 cm)	Call for details

1 in = 2.54 cm
1 lb = 0.454 kg

* Production speeds are estimates are based on 16" centers and will vary depending on ink manufacturer, humidity of shop, and other variables.

** Alternate wattages and voltage may be available by special request. (208V)

*** All shipping weights and dimensions are for continental US shipping only. Call for other shipping specifications. Ex-works from Bethlehem, PA.